

### Performance Range

- ▶ Flow rate up to 325 l/min. (19.5 m³/h)
- ▶ Dynamic head up to 32 m.

### Applications

- ▶ Used in pressure sewage system.
- ▶ Drainage of waste water from individual residences, apartment, buildings, recreational developments, motels.
- ▶ Transferring waste water of commercial buildings, industrial plants, waste water sampling, small hospitals.
- ▶ Schools, federal, state and local parks' waste water drainage.
- ▶ To transfer various waste water and sewage.

### Features

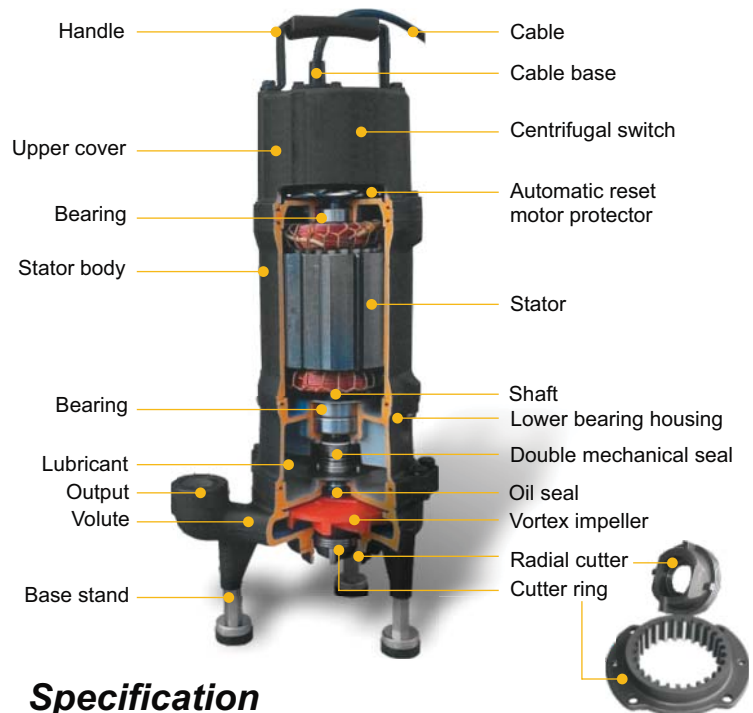
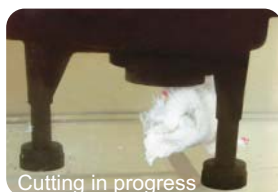
- ▶ Durable heavy duty finned cast iron construction.
- ▶ Grinder is complete unit, light weight, compact, and portable, easy to be installed.
- ▶ Double protection at connection box: barrier grommet, barrier epoxy, prevent water ingress to the motor area, assuring a longterm reliable operation. Additionally, epoxy encapsulation and stripped leads positively eliminate wicking from the cable.
- ▶ Two balls bearing construction support shaft and rotor.
- ▶ Dry type motor with high efficiency and low current. Equipped with auto reset motor protector, prevent the motor damage from abnormal heat and current.
- ▶ The dual silicon carbide mechanical seal system and extra oil seal protection protects the motor from sewage contamination, to provide you exceptionally long pump service life.
- ▶ An excellent vortex impeller and casing water cavity housing design. Provide high efficiency and power saving, handling ground slurry and sewage without clogging or binding.
- ▶ Radial cutter and cutter ring: corrosion resistant material, hardened to 55 - 60 Rockwell C.

### Direction of Rotation

- ▶ Clockwise as seen from the motor rear end.

### Cutting Ability Demonstration

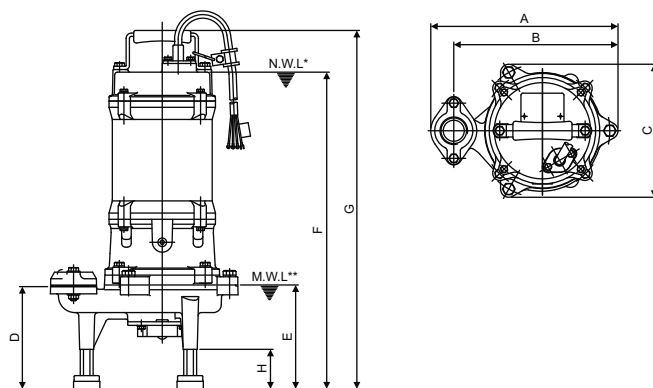
- ▶ Specialized one single strong shaft with impeller and radial cutter, dramatically reduces the torque requirement on the motor, cuts with less horsepower, and increases the pump's efficiency. What's more, it prevents clogging with some troublesome objects such as sanitary napkins, plastic, rubber, disposable diapers and cloth items. The design of Lubi grinder prevents clogging, binding and roping. They chop up almost anything and everything in order for you to get a continuous, long - term pumping service.



### Specification

		Horse Power	2, 3, 5 HP
Pumping liquid		Ambient temp	Max. +50°C
		Liquid temp	0°C to +50°C
		Liquid nature	Suitable for pumping waste water of commercial buildings, hotels & restaurants, hospitals, industrial plants & kitchen waste.
Pump	Construction	Impeller	Vortex
		Cutting Cons.	Grinding
		Mech. seal	Double Mechanical seal
		Upper Bearing	Ball Bearing
		Lower Bearing	Two ball Bearings
	Material	Impeller	Grey Iron
		Volute	Grey Iron
		Radial Cutter	S.S AISI 440
		Cutter Ring	S.S AISI 440
		Mechanical seal	Motor side - Carbon v/s Ceramic Pump side - Silicon carbide v/s Silicon carbide
Motor		Type	Dry motor
		Insulation	F Class
		Frequency	50 Hz
		Thermal Protector	Automatic reset motor protector Water detector (optional)
	Material	Stator body	Grey Iron
		Shaft	S.S AISI 410
		Cable	PVC
	Protection		IP 68
Duty		S1 - When pump is completely submerged. S3 - When pump is partially submerged.	
Voltage		1 Ph. 230 V +5/-15%, 3 Ph. 400 V +5/-15%	





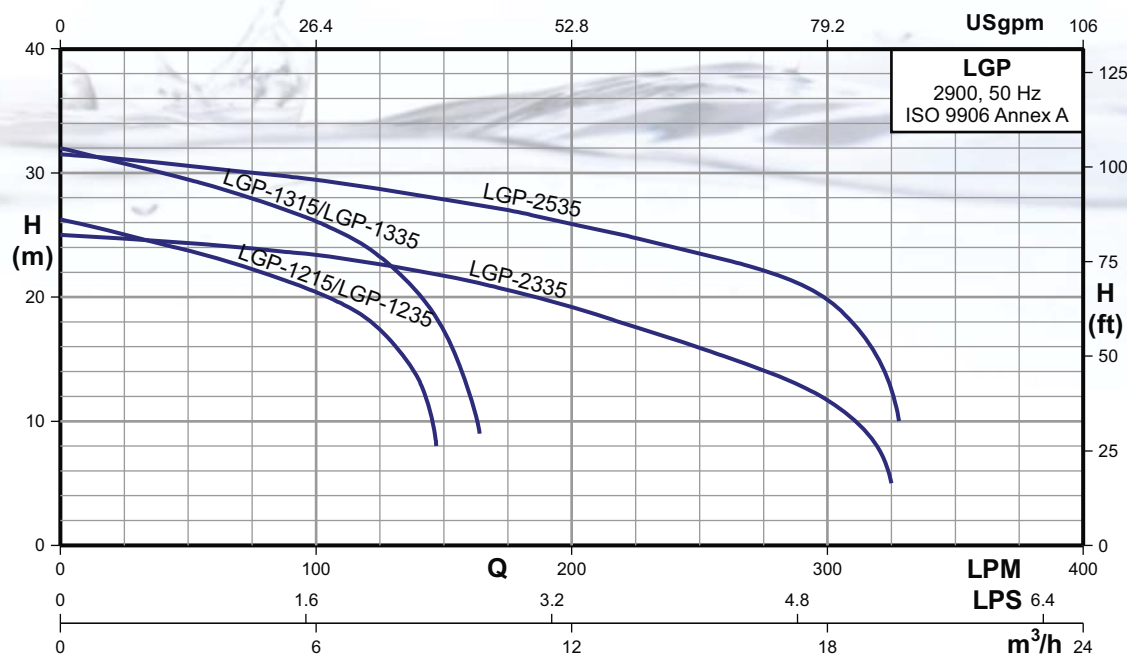
**Note :** (\*) Minimum level for pump to operate on a continuous basis (S1 operation).  
(\*\*) Minimum acceptable liquid level of the pump. Pump should switch off at this level.

## DIMENSIONS

Type	PHASE	DN	DIMENSIONS (MM)								NET WEIGHT (kg.)	GROSS WEIGHT (kg.)	VOLUME (m³)	CABLE DATA cable x core x size (mm²) x length (m) x Material
			A	B	C	D	E	F	G	H				
LGP-1215/1215F	1Ø	32	286	250	203	156	160	543	610	61	38.0	70.0	0.126	1 x 3 x 2.0 x 8 x PVC
LGP-1235/1235F	3Ø	32	286	250	203	156	160	492	556	61	34.0	64.0	0.117	1 x 4 x 1.8 x 8 x PVC
LGP-1315/1315F	1Ø	32	286	250	203	156	160	543	610	61	40.0	72.0	0.126	1 x 3 x 3.5 x 8 x PVC
LGP-1335/1335F	3Ø	32	286	250	203	156	160	492	556	61	36.0	66.0	0.117	1 x 4 x 1.8 x 8 x PVC
LGP-2335	3Ø	50	416	339	195	226	160	522	593	61	51.0	86.0	0.156	1 x 4 x 1.8 x 8 x PVC
LGP-2535	3Ø	50	416	339	195	226	160	543	616	61	54.0	89.0	0.161	1 x 4 x 1.8 x 8 x PVC

All Dimensions in mm

## PERFORMANCE CHART AT n = 2900 RPM FOR GRINDER PUMPS



## PERFORMANCE DATA AT n = 2900 RPM

Model	Phase	Power		Start Method	m³/h l/min.	1.5	3	4.5	6	7.5	9	12	15	18	19.5
		kW	HP			25	50	75	100	125	150	200	250	300	325
LGP-1215/1215F	1Ø	1.5	2.0	Capacitor	H(m)	25	23.9	22.2	20.5	17.3	-	-	-	-	-
LGP-1235/1235F	3Ø			Direct		30.8	29.4	28	26	23.2	17.2	-	-	-	-
LGP-1315/1315F	1Ø	2.2	3.0	Capacitor		24.6	24.4	24	23.7	22.8	21.7	19.1	16	11.7	5
LGP-1335/1335F	3Ø			Direct		31	30.6	30	29.5	29	28	25.9	23.5	19.9	12
LGP-2335	3Ø	2.2	3.0	Direct											
LGP-2535	3Ø	3.7	5.0	Direct											

Note : • Available on request : Other Voltages, 60Hz.  
• Subscript "F" pumps will be provided with a float switch.